

Home 2 Sell

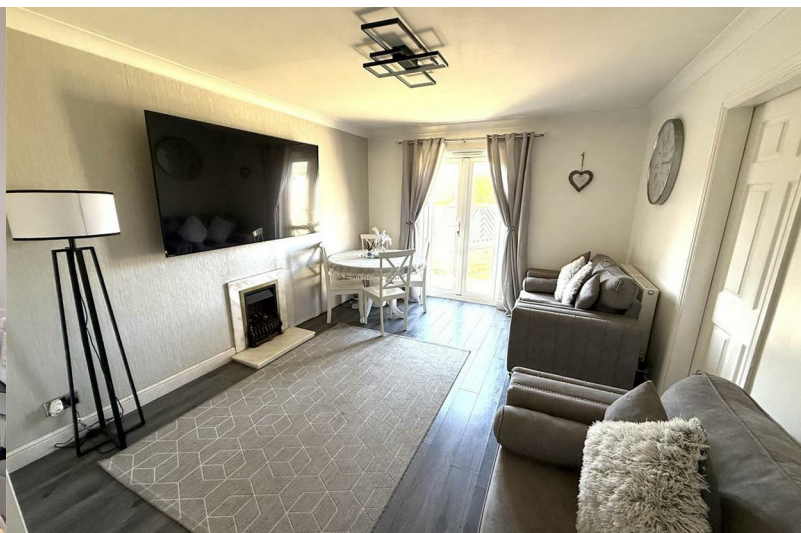
Quality Service For Less



# 1 Hilltop Lane

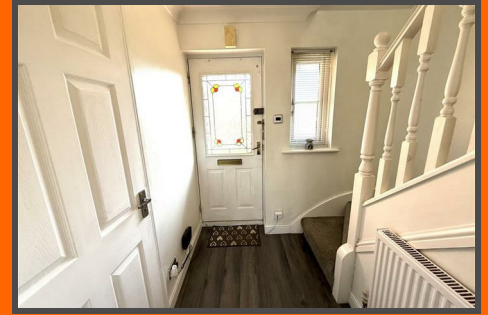
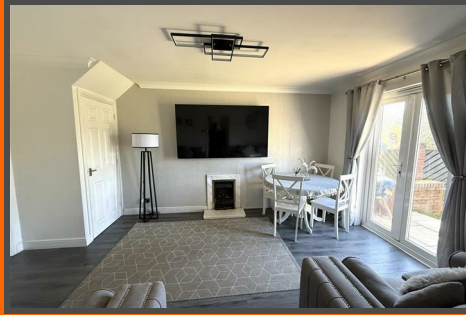
Kilburn, Belper, DE56 0LG

Chain Free £250,000



Occupying a much sought after semi rural and highly convenient location is this impressive three bedroomed detached residence, which represents an excellent opportunity for the discerning purchaser looking to acquire an easy to manage well presented family home. The property has the benefit of gas central heating and sealed unit PVCu double glazing. A recommended internal inspection will reveal, entrance hall with stairs to first floor, guest cloakroom WC, lounge through diner with feature fireplace, well appointed fitted kitchen with built in appliances. The first floor landing leads to three well proportioned bedrooms and a luxury family bathroom having a four piece suite. Outside is an integral single garage with up and over door, tarmac driveway providing off road parking and to the rear a delightful rear garden. Viewing Essential. NO CHAIN INVOLVED.

DRAFT DETAILS SUBJECT TO CHANGE AND VENDOR APPROVAL.



### Entrance Hall

The property is entered via a composite door with glazed inserts, central heating radiator, PVCu double glazed window to the front elevation, laminate wood grain effect flooring, ceiling light and stairs off to the first floor landing.

### Guest Cloakroom WC

Having a modern two piece suite comprising of a close couple WC and a pedestal hand wash basin. Having complimentary wall panelling, central heating radiator and a PVCu double glazed opaque window to the front elevation.

### Lounge Dining Room

15'7" x 11'0" (4.76m x 3.37m )

Having PVCu double glazed doors to the rear garden aspect, gas coal effect living flame fire with marble hearth and back drop surround, television point, useful storage cupboard, wood grain effect flooring and ceiling light.

### Fitted Kitchen

15'2" x 7'7" (4.63m x 2.33m )

Having a modern fitted kitchen comprising of a range of base wall and matching drawer units with contrasting work surfaces over incorporating a sink drainer unit with Swan neck mixer tap, integrated five ring gas hob with stainless steel extractor canopy over, integrated electric double oven, space for a dishwasher and space and plumbing for an automatic washing machine. Integrated fridge and integrated freezer, ceramic tiled flooring and a PVCu double glazed window to the front elevation. Door to the side access with opaque glazed insert and two ceiling lights.

### To the first floor landing

Having a PVCu double glazed window to the side elevation, central heating radiator and access to the loft void.

### Master Bedroom

9'3" red 7'7" red 4'3" x 19'9" max (2.82m red 2.33m red 1.32m x 6.03m max )

This generously proportioned room has a PVCu double glazed window to the front elevation, central heating radiator and recessed ceiling lighting.

### Bedroom Two

8'8" x 11'5" (2.66m x 3.48m )

Having a PVCu double glazed window to the rear elevation enjoying a fine aspect and view, central heating radiator and recessed ceiling lighting.

### Bedroom Three

7'8" x 8'9" (2.35m x 2.67m )

Having a PVCu double glazed window to the rear elevation enjoying a fine aspect and view, central heating radiator and recessed ceiling lighting.

### Family Bathroom

Having a luxury four piece suite comprising of a close couple WC, vanity hand wash basin, bath with panelled side and a shower enclosure having a thermostatically controlled shower having rain head and hand held attachment. Having porcelain floor and wall tiling, recessed ceiling lighting and ladder style heated towel rail. PVCu double glazed opaque window to the front elevation and extractor fan. Useful storage cupboard.

### Outside

To the front of the property there is a tarmac

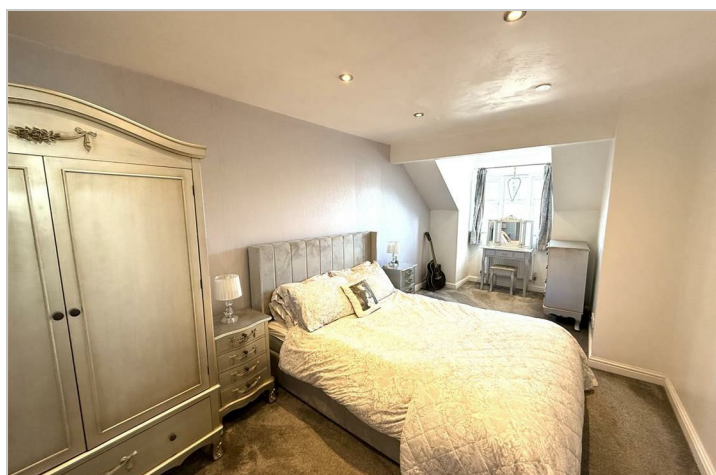
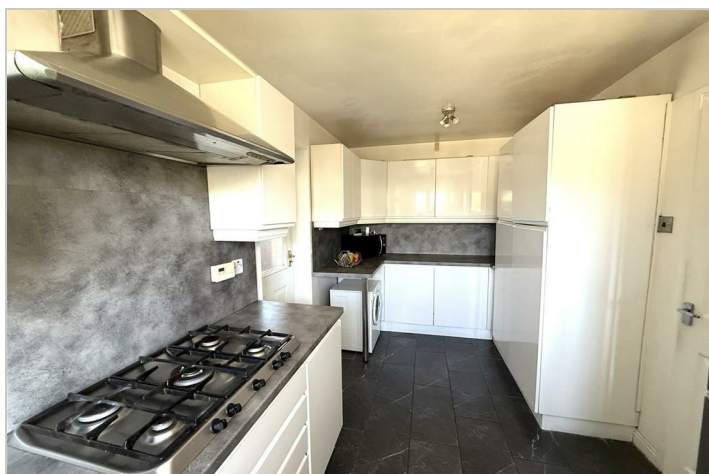
driveway providing off road parking and leading to a single semi-integral garage with up and over door. To the front of the property, there is a paved path leading to entrance having a storm porch with adjacent lawn. To the rear there is a paved patio area with lawn.

### Area

Kilburn is a popular village within easy reach of Belper, Ripley, Derby and the A38, M1 and A6. The village offers amenities such as primary schools, village pubs and secondary schooling is within walking distance.

### Directional Note

From the Belper Branch of Home2sell turn left onto New Road, continue through the traffic lights and past The Market Place, which becomes High Street and then Spencer Road, turning right at the mini-roundabout onto Short Street and left at the next mini-roundabout onto Kilbourne Road. Follow this road out of Belper towards Kilburn and take a left-hand turn before the bridge onto Hilltop Lane the property will be found on the left-hand side clearly identified by our distinctive 'For Sale' sign.



## Road Map



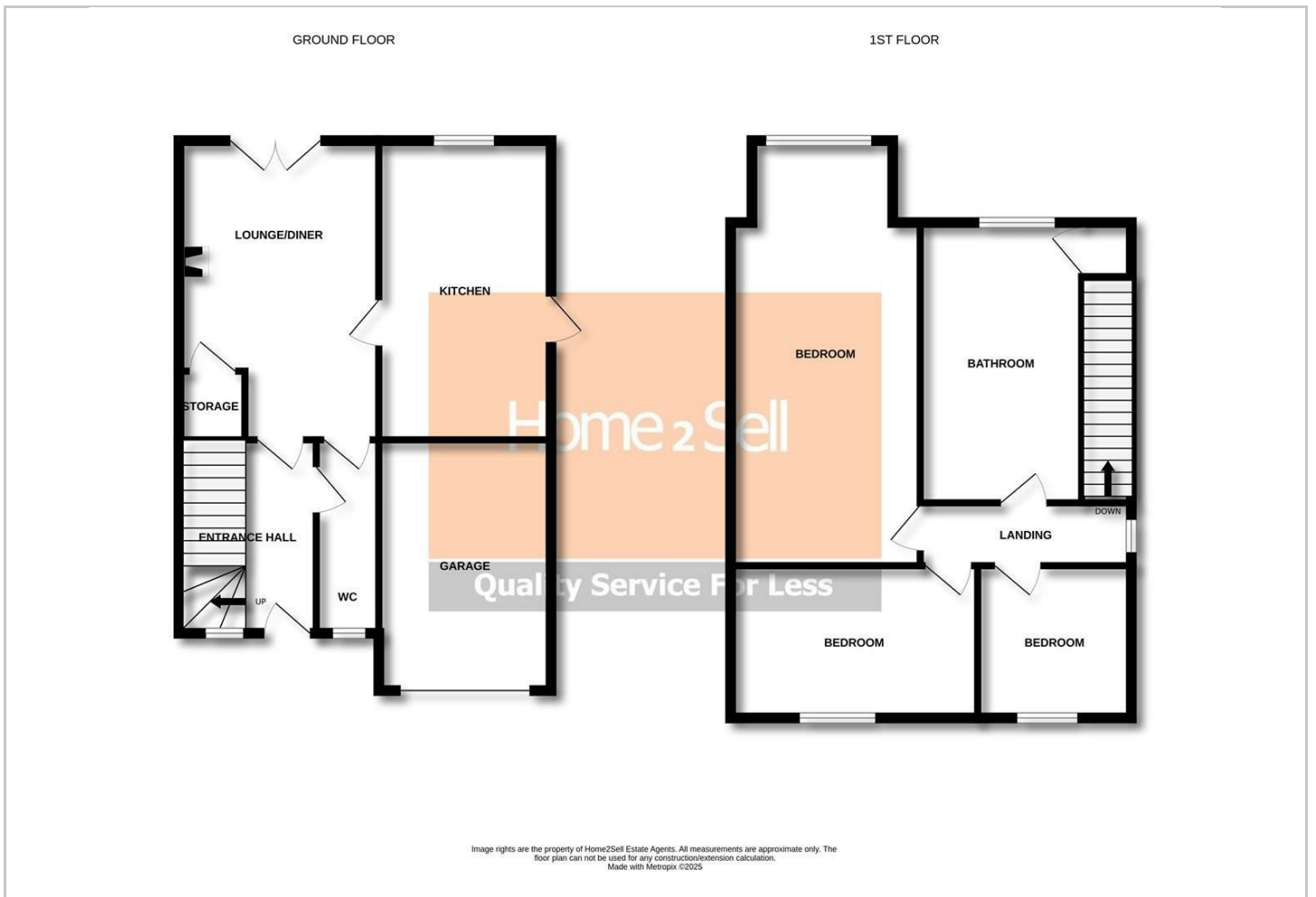
## Hybrid Map



## Terrain Map



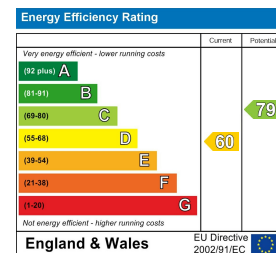
## Floor Plan



## Viewing

Please contact our Belper Sales Office on 01773 823 200 if you wish to arrange a viewing appointment for this property or require further information.

## Energy Efficiency Graph



These particulars, whilst believed to be accurate are set out as a general outline only for guidance and do not constitute any part of an offer or contract. Intending purchasers should not rely on them as statements of representation of fact, but must satisfy themselves by inspection or otherwise as to their accuracy. No person in this firm's employment has the authority to make or give any representation or warranty in respect of the property.